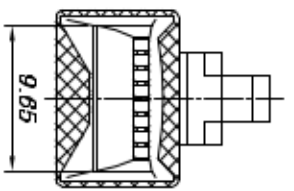
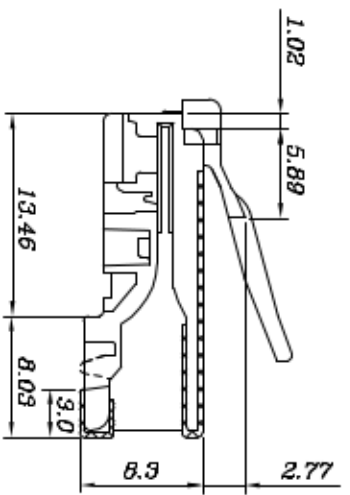
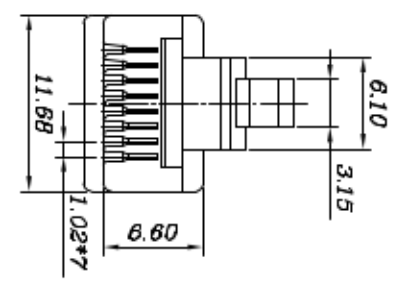
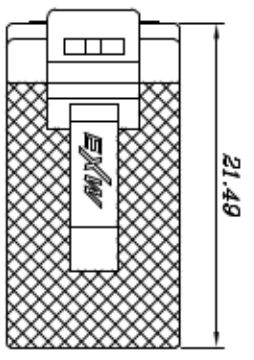


REV	出图日期	变更内容	修改
11/05/05		MODIFICATION	DRAWN



Round

SPECIFICATIONS
1. ELECTRICAL:
 UL APPLICATIONS: 250 VOLTS AC MAX. AT 2 AMPS.
 DIELECTRIC WITHSTANDING VOLTAGE: 500 VOLTS AC.
 INSULATION RESISTANCE: 100 MΩ.
 TERMINATION: 20m D. MAX AFTER ENVIRONMENTAL TESTING.
2. MECHANICAL:
 CABLE-TO-PLUG TENSILE STRENGTH: 19.6N/PCS. MIN.
 DURABILITY: 200 MATING CYCLES.
3. MATERIAL & FINISH:
 HOUSING: POLYCARBONATE, UL94V-0 OR UL94V-2.
 COLOR: TRANSPARENT OR OTHER COLOR ARE AVAILABLE.
 CONTACT BLADE: PHOSPHOR BRONZE.
 CONDUCTOR: STRANDED & SOLID WIRE, 24AWG, 26 AWG.
 GOLD PLATING: 30"-500" ARE AVAILABLE.

规范

1. 电器:

UL应用最大250 VOLTS AC.
 介质耐电压伏特数: 500 VOLTS AC.
 绝缘阻抗: 100 百万欧姆.
 终端阻抗: 在环境测试后最大可承受20 微欧姆终端阻抗.

2. 机构

拉力测试: 至少19.6N/PCS.
 耐力测试: 至少200次之插拔测试.
3. 材质表面处理

塑胶壳: 聚碳酸酯, UL-94V-0 or UL94V-2.
 颜色: 透明, 或者其他颜色亦可.
 金片: 磷铜片.
 导体: 多股线 & 单股线, 24AWG, 26AWG.
 镀金厚度: 30"~500", 皆可提供.

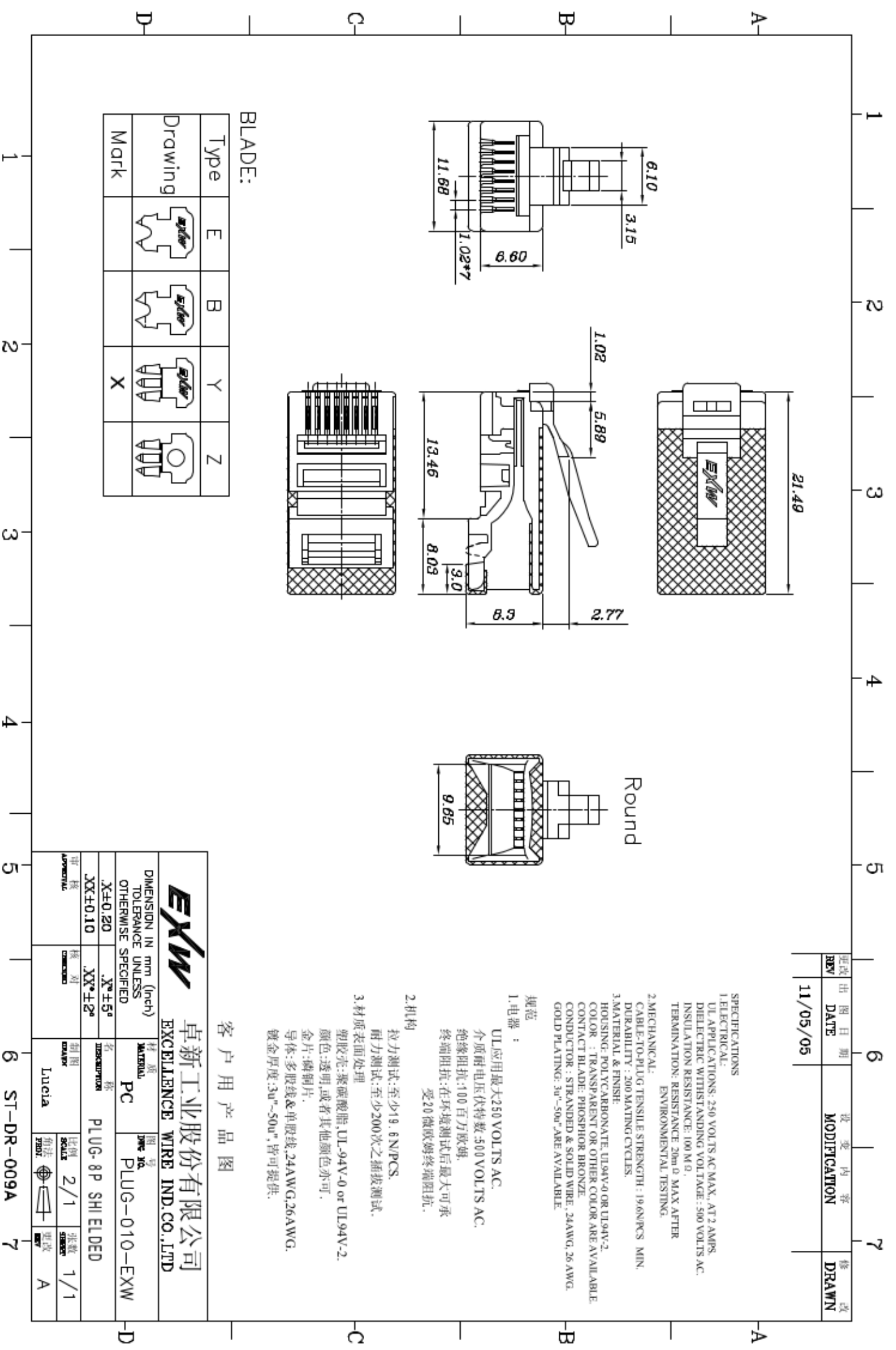
客户用产品图

BLADE:

Type	E	B	Y	Z
Drawing				
Mark			X	

EXW 卓新工业股份有限公司
 EXCELLENCE WIRE IND.CO.,LTD

DIMENSION IN mm (Inch)		图号	
TOLERANCE UNLESS OTHERWISE SPECIFIED		MATERIAL	
X±0.20	XX±5°	PC	PLUG-010-EXW
XX±0.10	XX±2°	INSULATION	PLUG-8P SHI ELDED
审核 APPROVAL	核准 CHECKED	制图 DRAWN	比例 SCALE
		Lucia	2/1
			张数 SHEETS
			1/1
			更改 REV
			A



6 ST-DR-009A 7