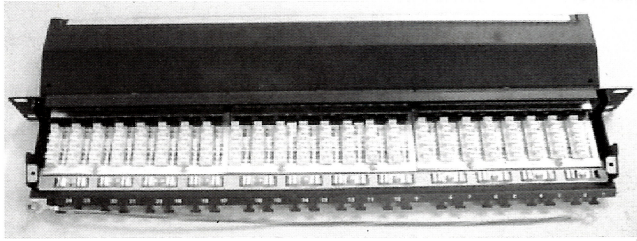


# Full shielded patch panel installation instruction

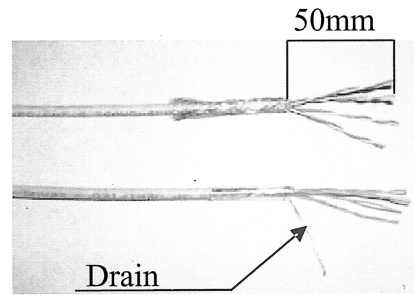
PPSB series

1



Load down the screws and opening the metal cover.

2



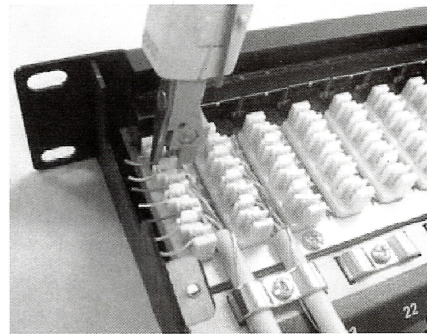
Strip approximately 50mm from the cable jacket, fold back the foil or braid shield, and separate the wire into 4 pair each.

3

T568A	T568B
Pin 1 White/Green	Pin 1 White/Orange
Pin 2 Green	Pin 2 Orange
Pin 3 White/Orange	Pin 3 White/Green
Pin 4 Blue	Pin 4 Blue
Pin 5 White/Blue	Pin 5 White/Blue
Pin 6 Orange	Pin 6 Green
Pin 7 White/Brown	Pin 7 White/Brown
Pin 8 Brown	Pin 8 Brown

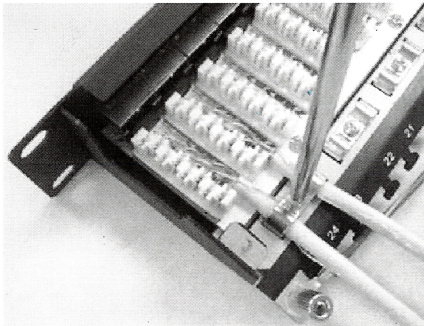
Follow the direction on the color-coding information to position T568A or T568B wiring, separate a little space on proper position and insert the wire pair by pair into each slot.

4



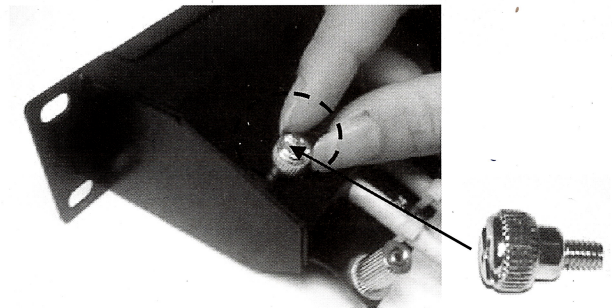
Press foil or braid shield to contact ground, and keep the cable straight; Push the wires with 110 or Krone impact tool and cut off the surplus wires.

5



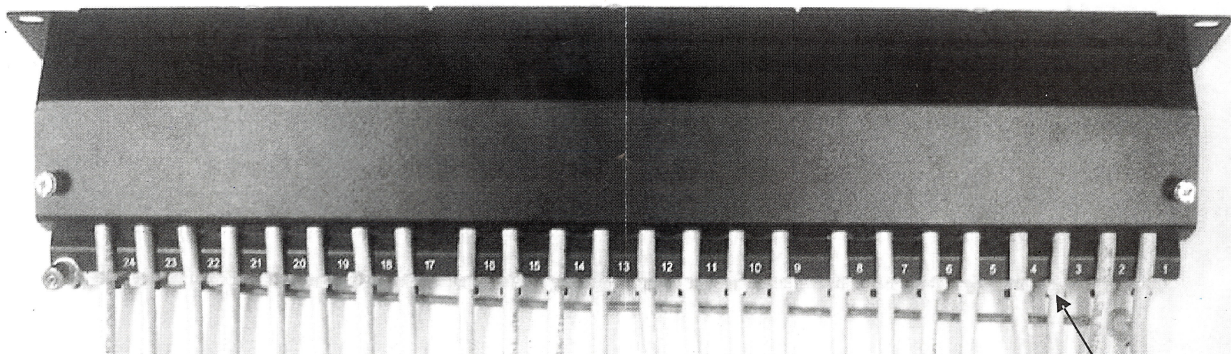
Fasten the screws through metal case to hold tightly down for two cable jackets in the same time.

6



Place the metal cover onto the bottom case and fasten screws.

7



Then complete the installation.

Cable tie