

## How to use the mobile app

This app is to Assist using the machines, multi functional powerful app help you solve a lot of setting and working status. Meanwhile this will help you to recognize a new way to control the machine.

If you connect the machine, Please note that:

### 1、 register an account

Every time you use the machine, please log in your account, This will help you to control the machine, such as active the electrode, and remote control the machine( which help you when someone else stole your machine, this will help you lock the machine and else one can not use it)

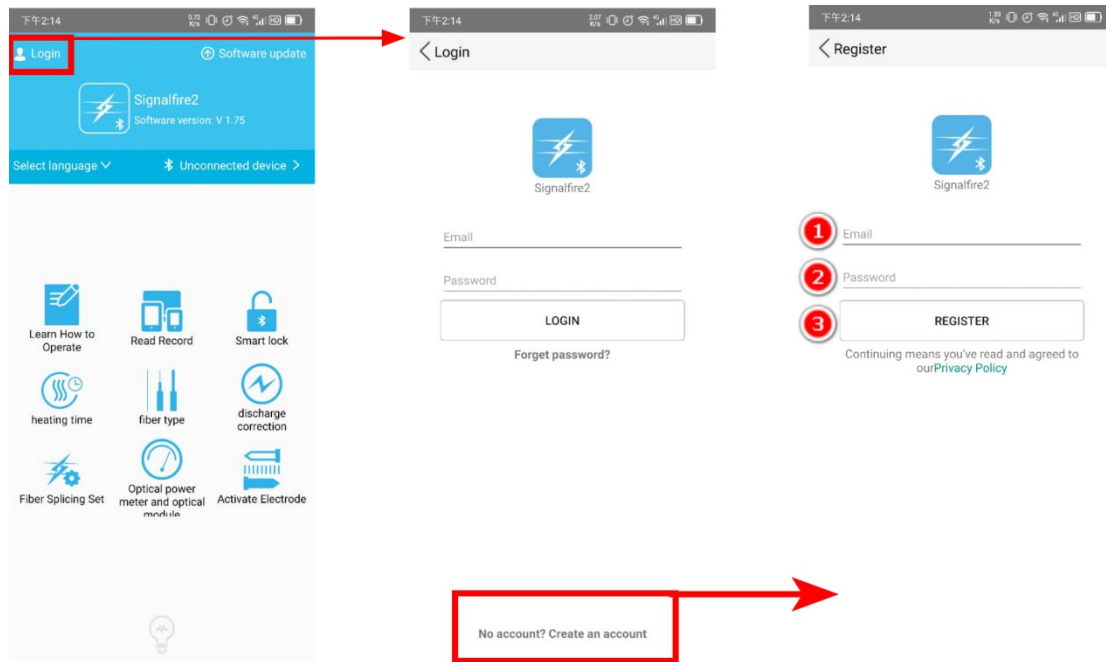
### 2、 connect the Bluetooth

when you want to use the mobile app, please open the mobile Bluetooth first, then the app will auto search the machine Bluetooth, so that connect the machine and then you can use the app to control the machine.

These 2 things must be done when you use the machine, and now let's start the machine app control guide:

## 1、Account function

### 1) Register a new account

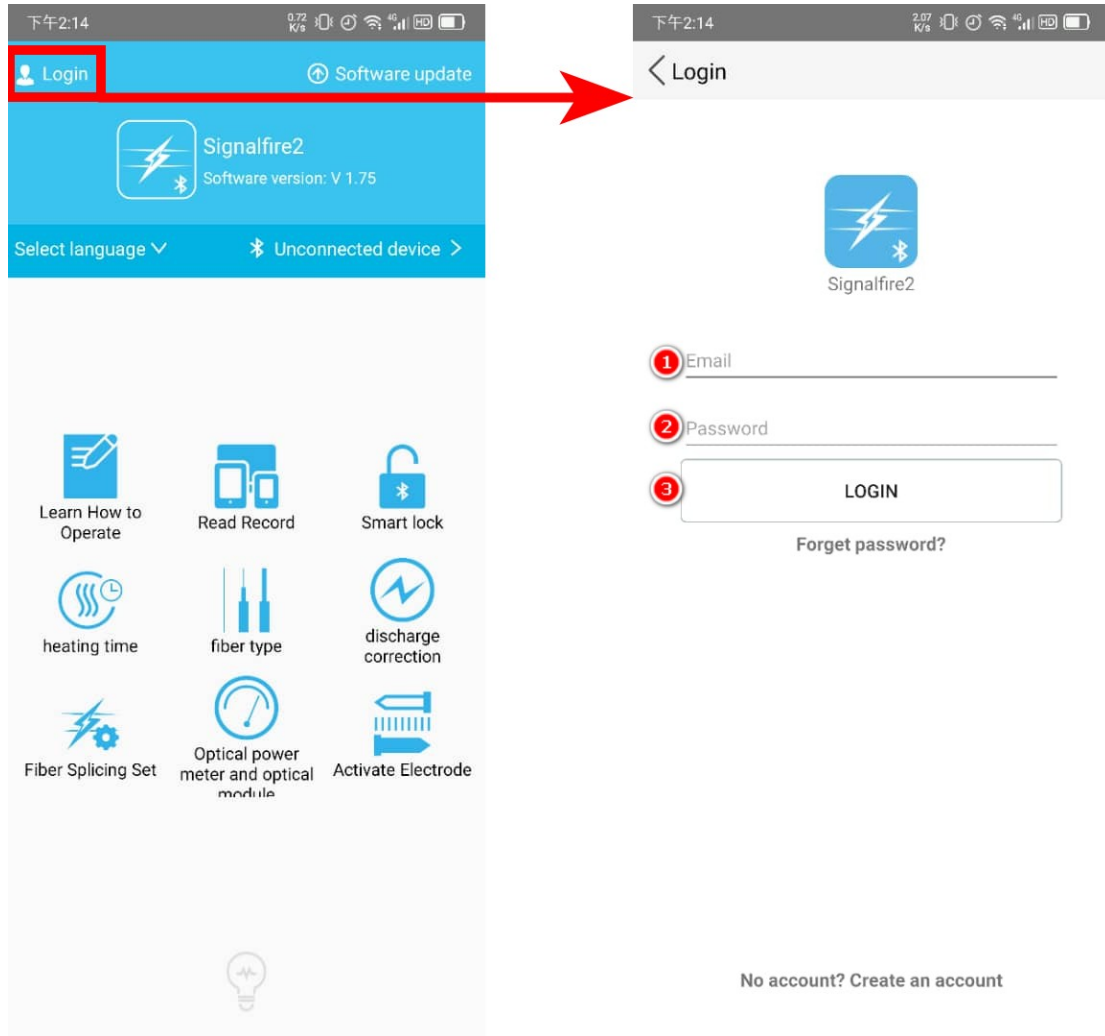


When you get a new machine, the first thing is to register a new account(if you have multi machines, and you can use one account to control all the machine).

Steps: choose “login” -> at the button, there is a “no account? Create an account”, click it -> fill the box, and your email,password, and then register.

(please note, keep your email in your heart, cause this will help you create a new password when you forget the password. And also this account will help you remote control the machine through the “Smart Lock” Function)

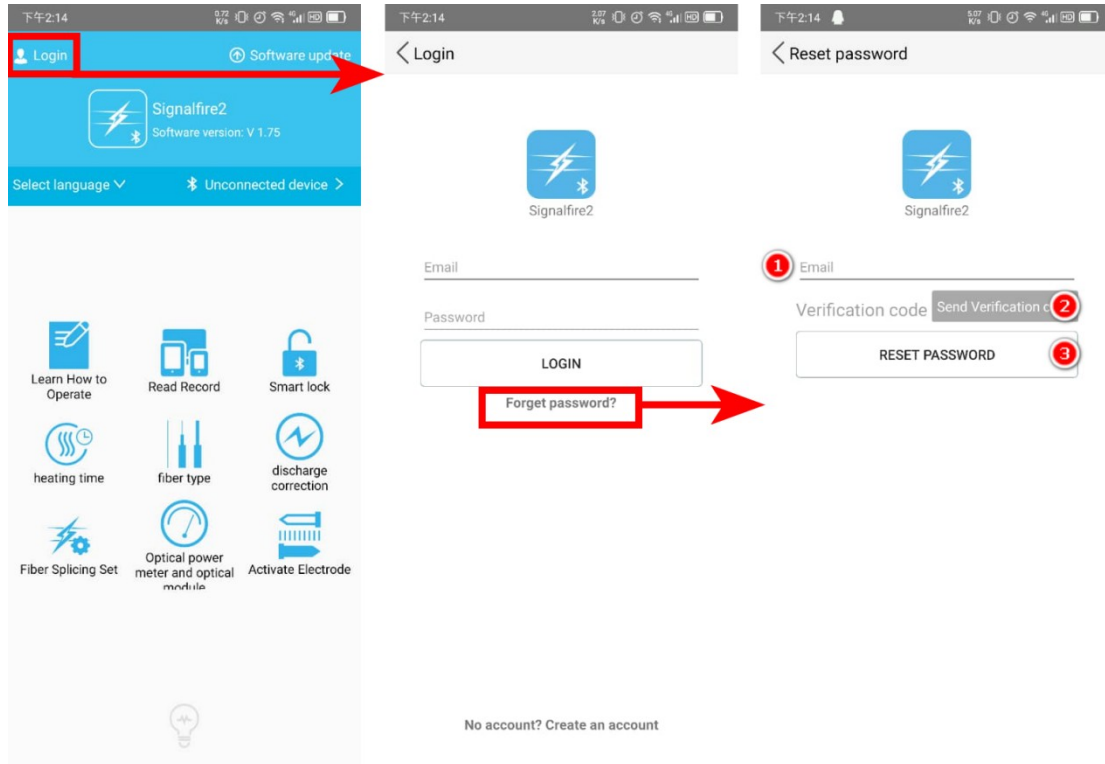
### 2) Log in account



After you register your account, please input your account through the text box and log in the account.

Steps: “login” -> fill the text box and login  
(this step can open the function of Read record, smart lock, discharge correction, fiber splicing set, and active electrode. So it's important to log your account when you use the machine)

3) forget password and renew password

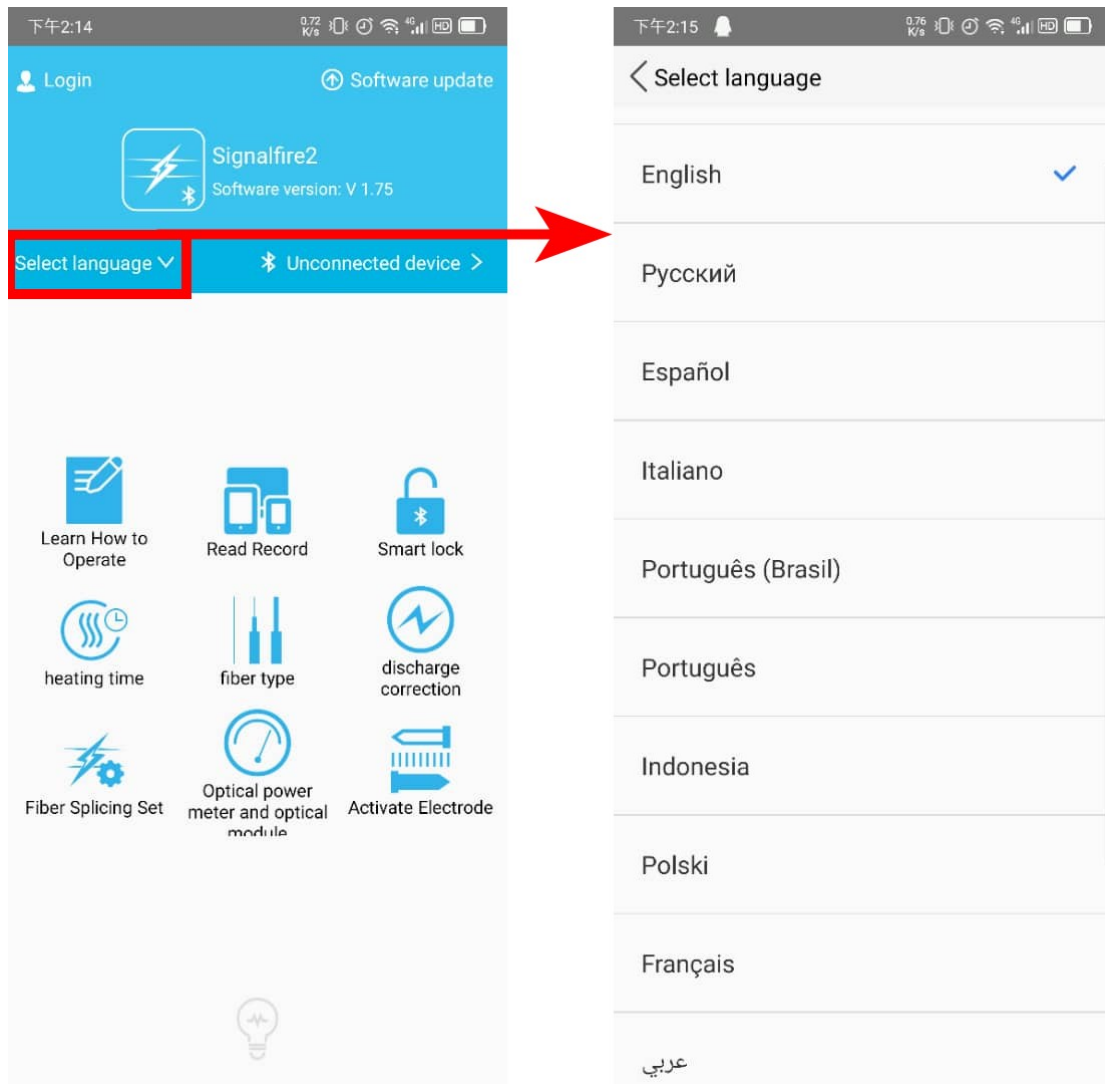


If you forget your password, then you can take this step to get back your account and get a new password.

Steps: “login” button -> press the “forgot password” button -> fill the box and then you will get a verification code from email and then you can reset the password

(this operation will help you get back the password, even you forget the password. so this remind you the email' s important again)

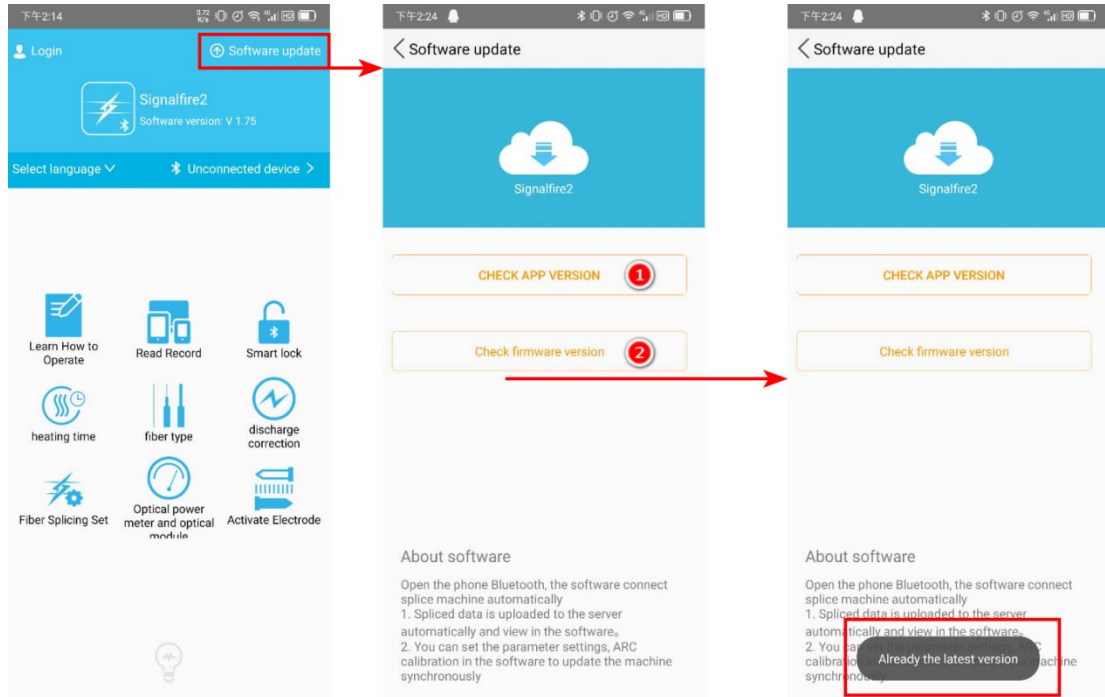
#### 4) Language setting



Different country have different using language, so this setting will help you get the language you use.

Steps: choose “Select language” -> select the language you use.

## 5) software or firmware upgrade

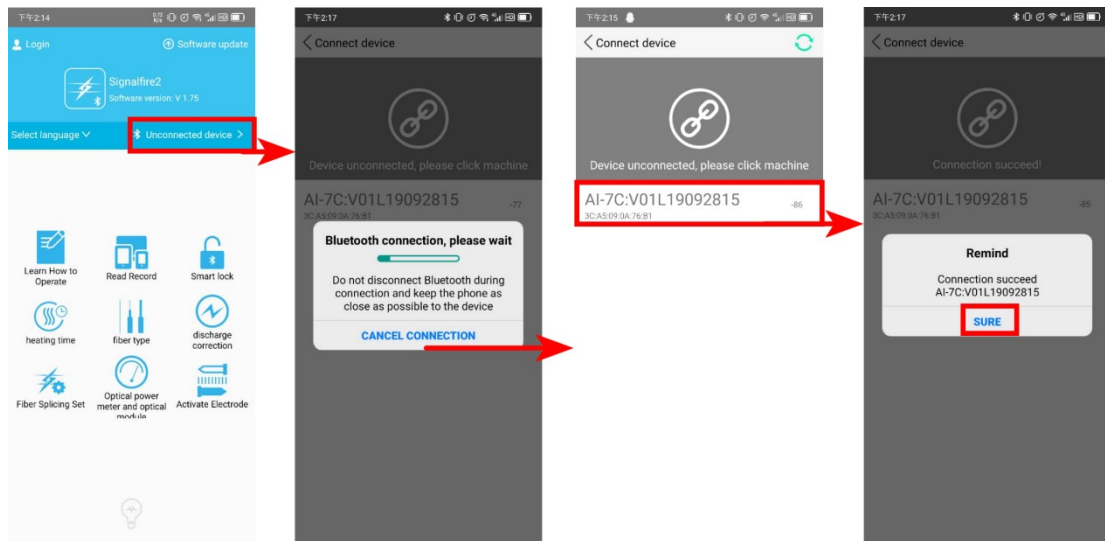


When you see the machine manufacture date is over a year, then you can check the firmware is need to upgrade or not, keep newest firmware, will improve the machine performance.

Steps: choose "Software update" -> 2 choice, one is update the mobile app version, another is update the machine firmware.

(if the software or firmware are all newest, it will remind you a message in the bottom).

## 6) connect the machine



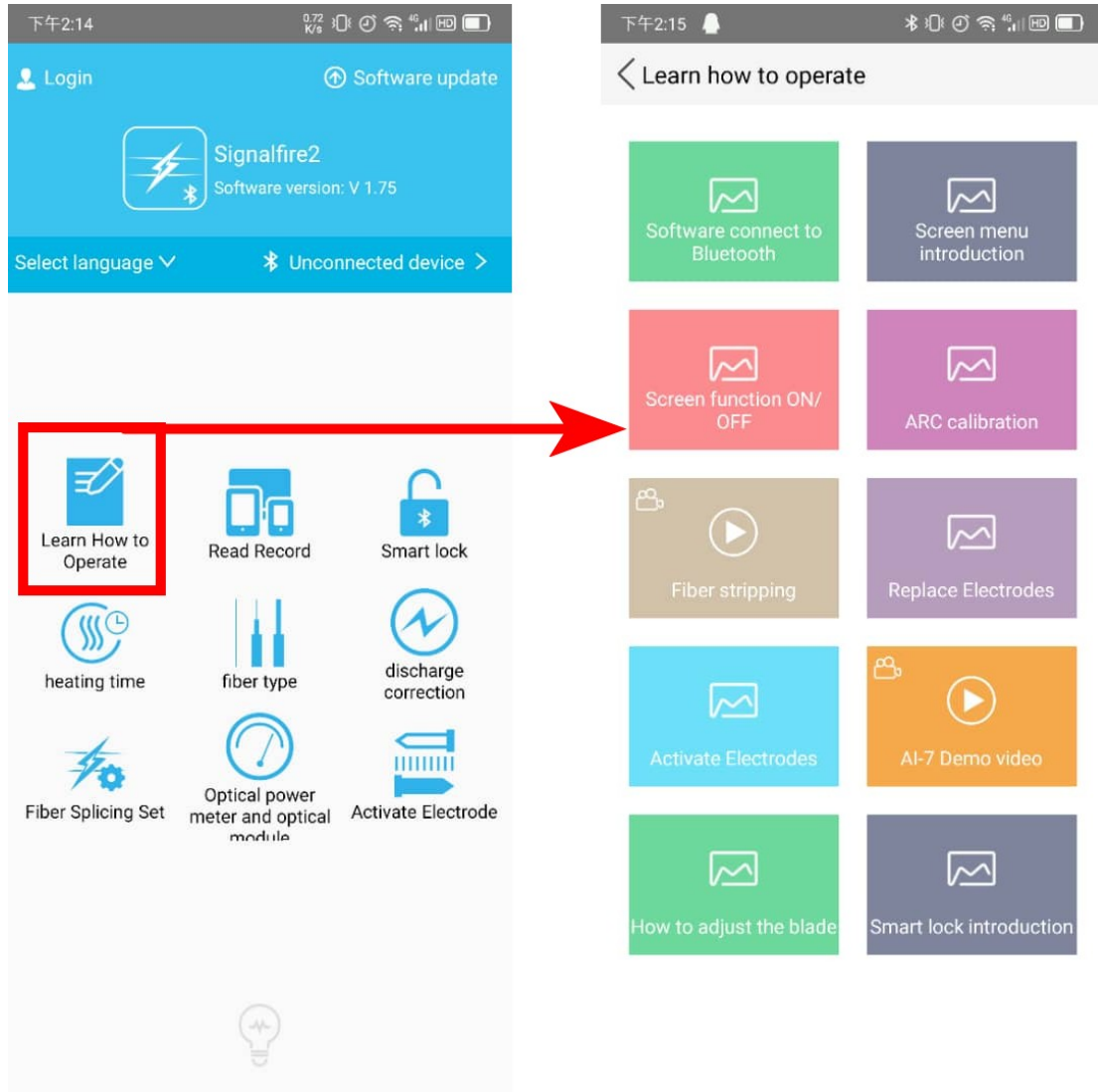
When you log in your account, then connect the machine, this is the essential step to control the machine, and do not forget it.

Steps: choose "unconnected device" → wait Bluetooth connecting → the device result choose the machine number → when it remind you connected succeed, you can control the machine Through app.

(when you first time use the app, it will remind you to connect the machine and Bluetooth, but After you connect once, and you open the Bluetooth before opening the app, then the app will auto connect. You can check it)

## 2、function page

### 1) operation method guiding

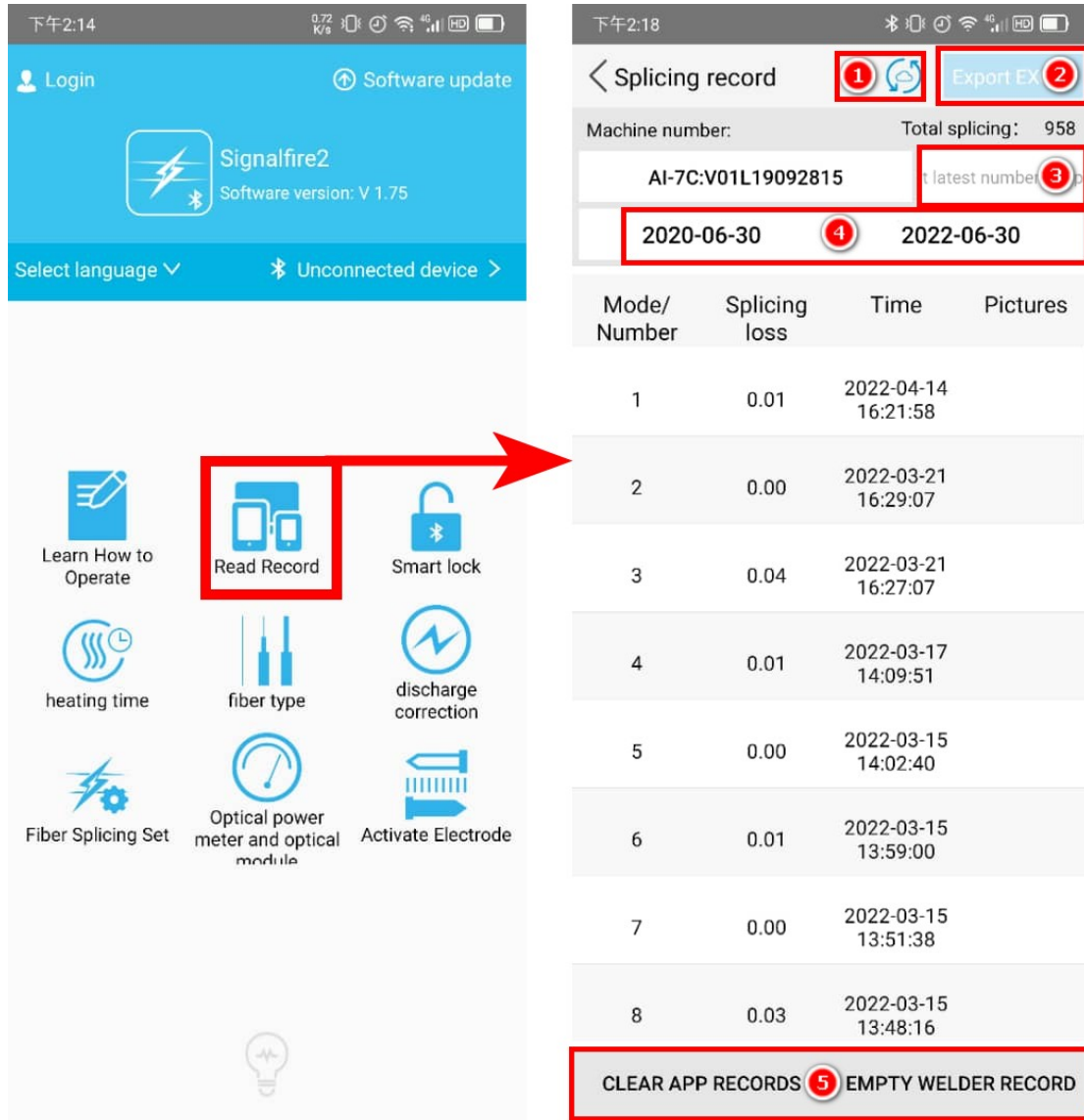


When you don' t know how to operate some steps or do not know how to use the machine, then you can see this. These include the picture guide also include some video guide, hope will helps you.

Steps: choose “learn how to operate” and then choose what you what to know.

## 2) fusion record data





When you want to check the fusion record, you can see from here. And there are 5 button to operate:

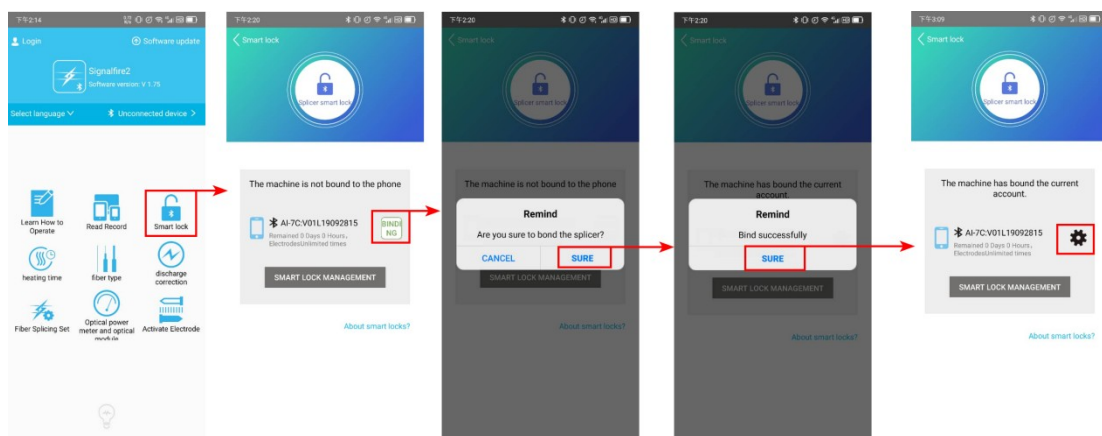
- 1、upload the date to cloud, and this will still storage the data in data base.
- 2、Export the excel data record, this can export the data to someone else who need it or need to check.
- 3、Choose the data times and locate it then see the data record.

- 4、Change the date range to check the correspond record.
- 5、Empty the data, when you don' t want these data anymore and you can clean it, also when machine remind you the data is full, you need click this button.

Steps: choose “read record” -> then according to your need, choose the relative button to filter the data.

### 3) Smart Lock

#### 3-1 binding the account



This operation will help your account binding to the

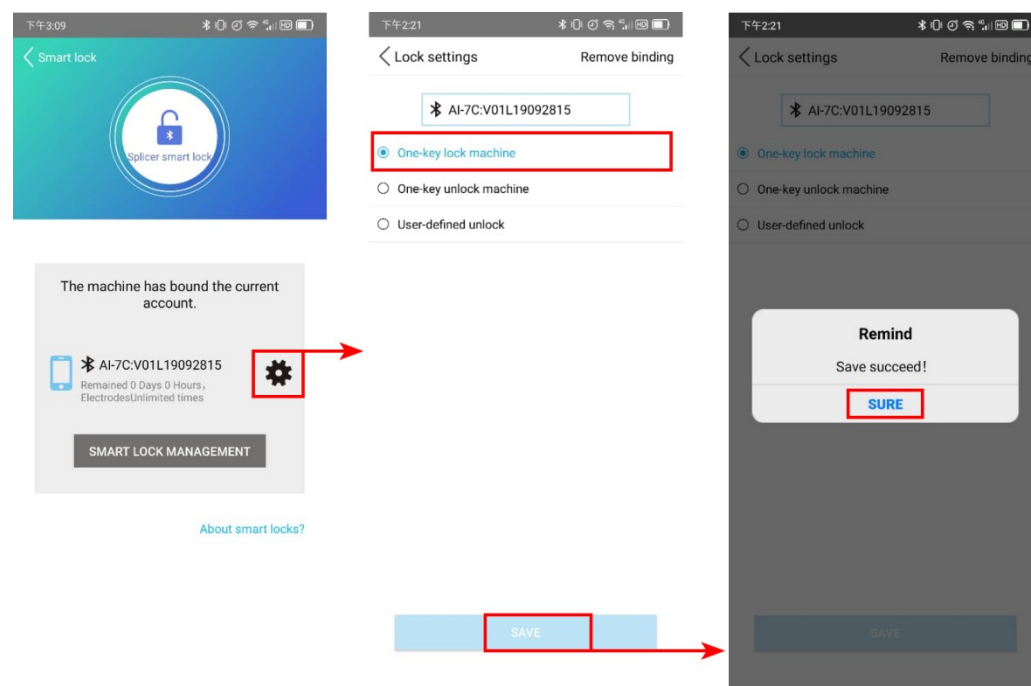
machine, which means the account have the one to control the machine in remote. Include remote locking the machine, remote unlocking the machine, and open a period time using for workers or lend it to someone.

Steps: choose “Smart lock” page -> press “binding” button -> sure binding -> sure successfully -> then you can see the gear to setting the smart lock.

(please note that smart lock correspond your machine safety, so make sure that binding account is your account).

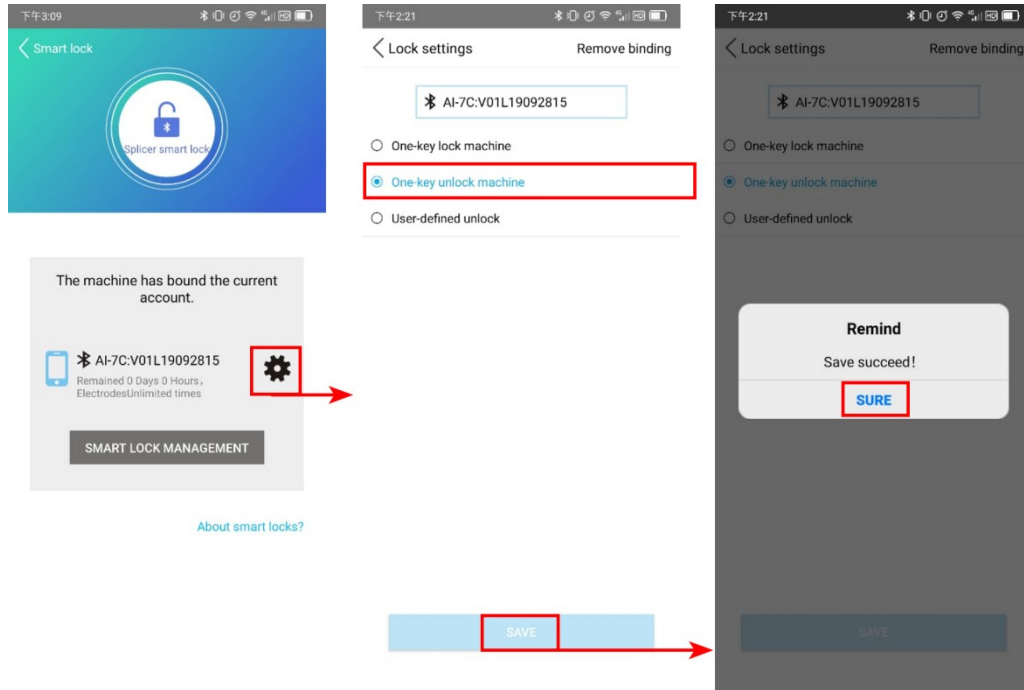
### 3-2 lock the machine and unlock the machine

#### One button to lock the machine



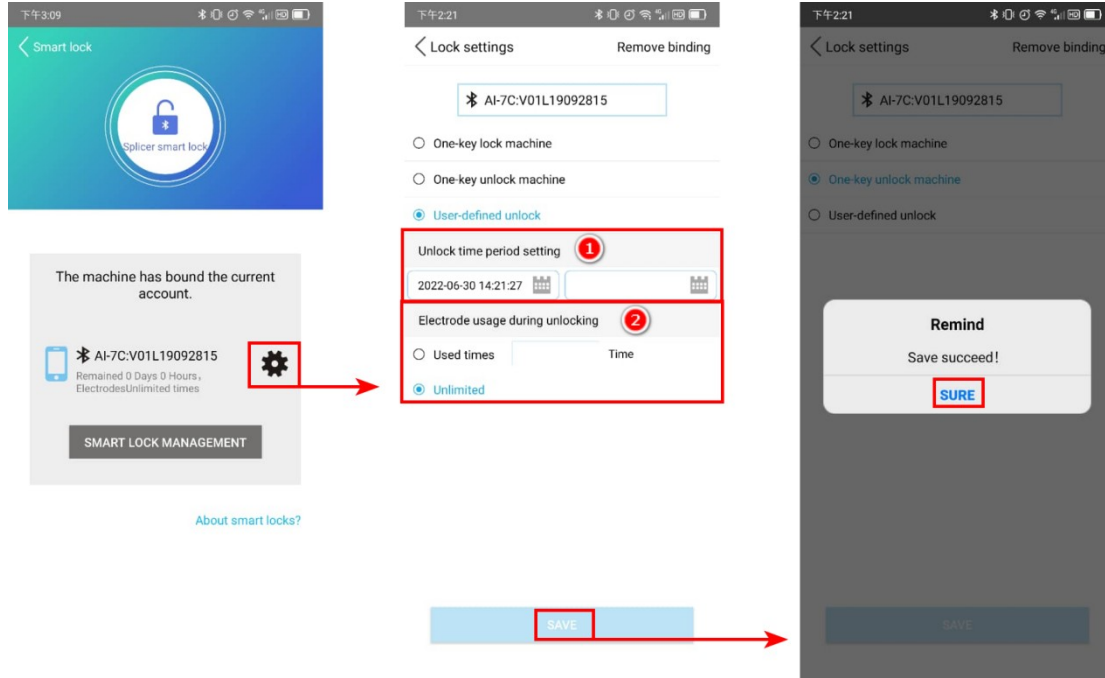
Steps: choose the gear button -> press “one key lock machine” -> sure succeed

#### One button to unlock the machine



Steps: choose the gear button -> press “one key unlock machine” -> sure succeed

## Period and using times limit lock the machine

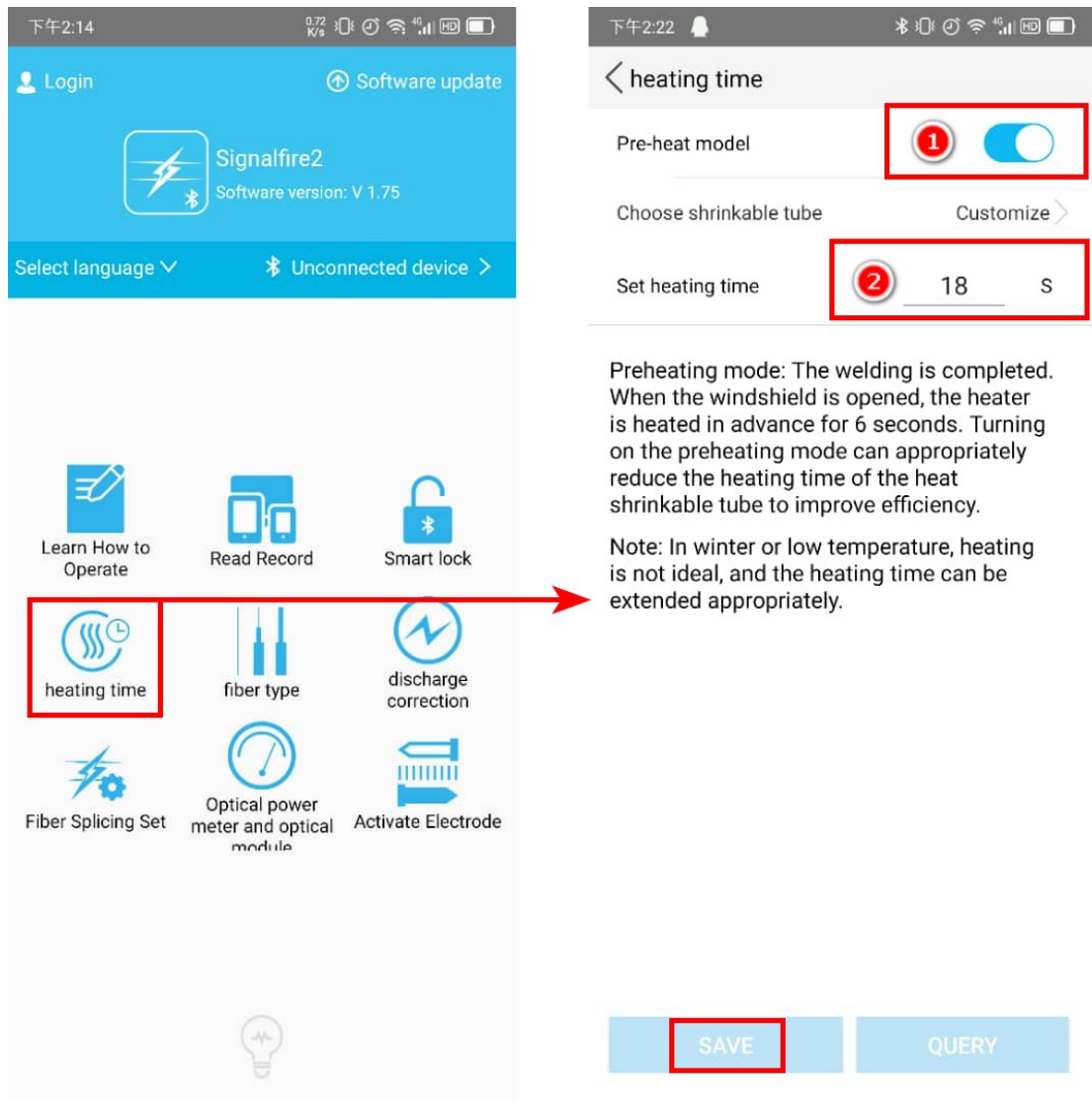


Steps:

Period lock the machine: choose the gear button -> press “unlock time period setting” -> sure succeed.

Using times lock the machine: choose the gear button -> press “electrode usage during unlocking” -> sure succeed.

#### 4) Heating oven heating time setting

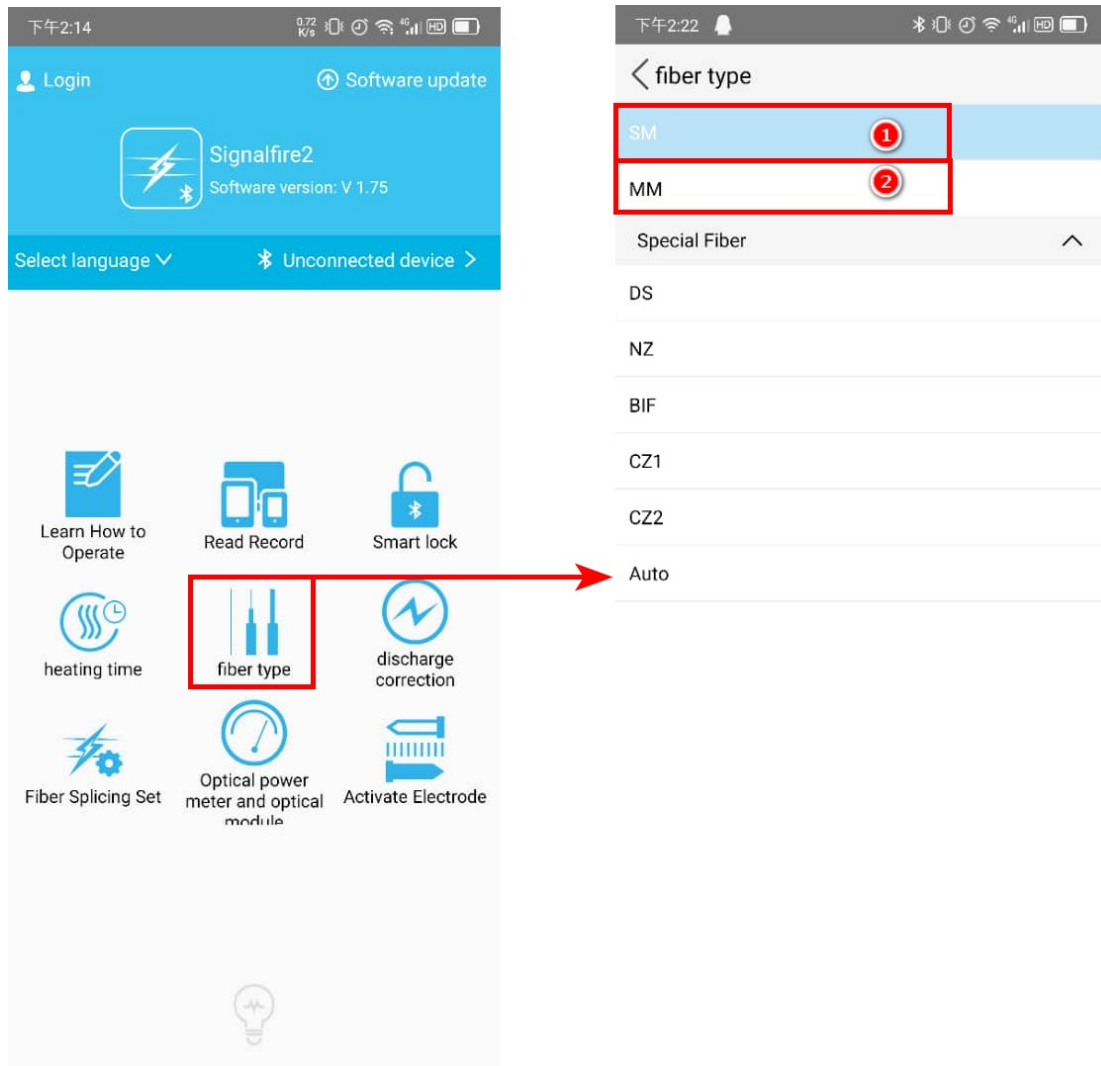


Usually we use Initial setting value, also we can change the heating time and pre-heat module on or off.

Steps:

- 1、choose the “heating time” button -> pre-heat model button (when you turn on it, after fiber fusion succeed, the heating will heating, turn off - when you open the heating oven, then heat)
- 2、choose the “heating time” button -> heating time change.

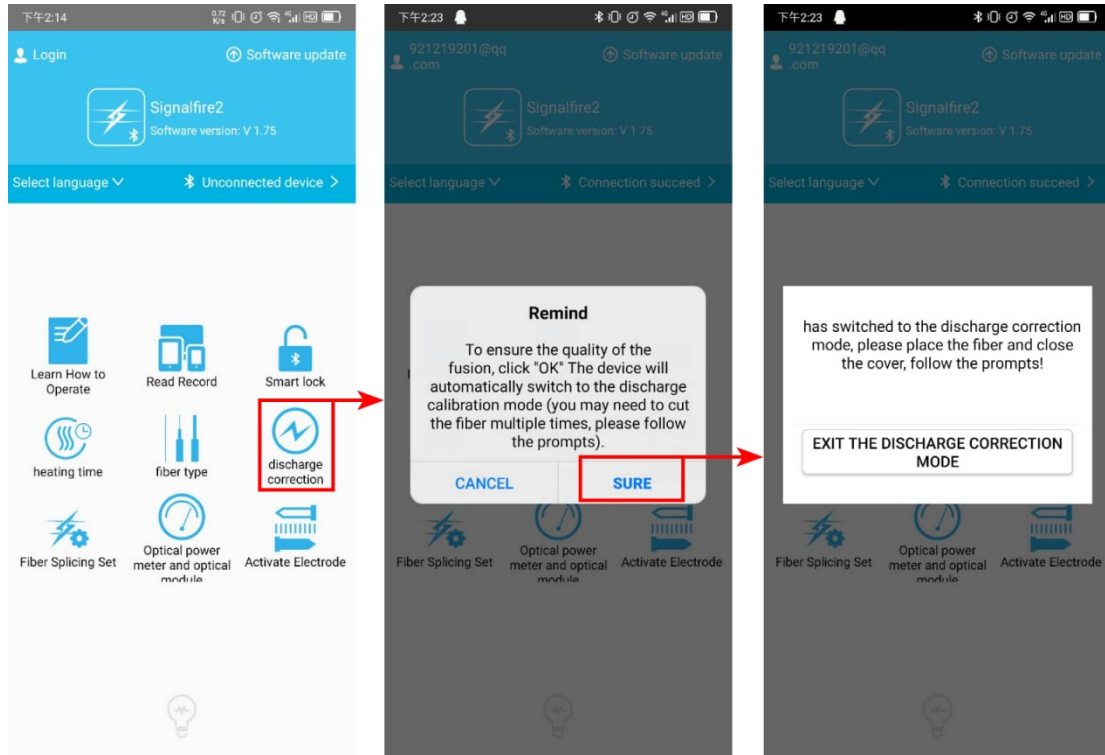
## 5) Fiber type



Fiber type there are 2 types we use most.and when you fusion, you can choose this from here.

Steps: choose “fiber type” page -> choose ‘SM’ for singal fiber, choose ‘MM’ for multi fiber.

## 6) discharge correction(or arc calibration)



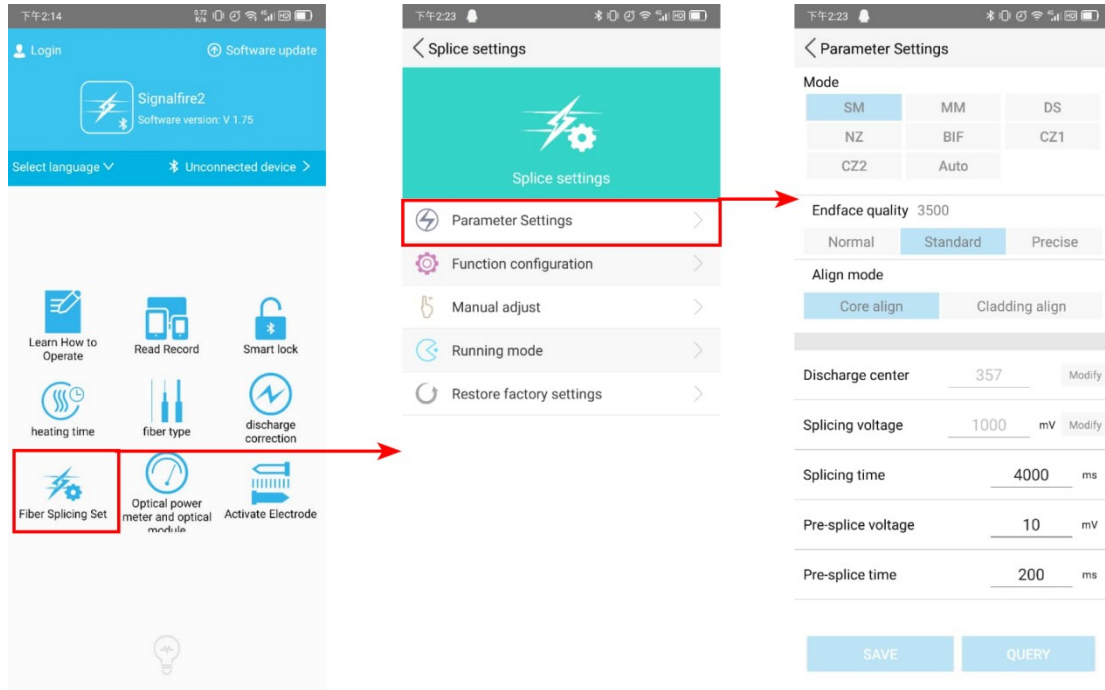
When you find the screen display of the fiber fusion center discharge voltage is low(little white and gap will be there after fusion), then you can have a this operation.

Steps: choose “discharge correction” page -> sure the remind -> into the arc calibration, this time please put the fiber on the machine and wait the machine do arc calibration and follow the voice guiding.

## 7) Fiber splicing setting

### 7-1 Parameter setting



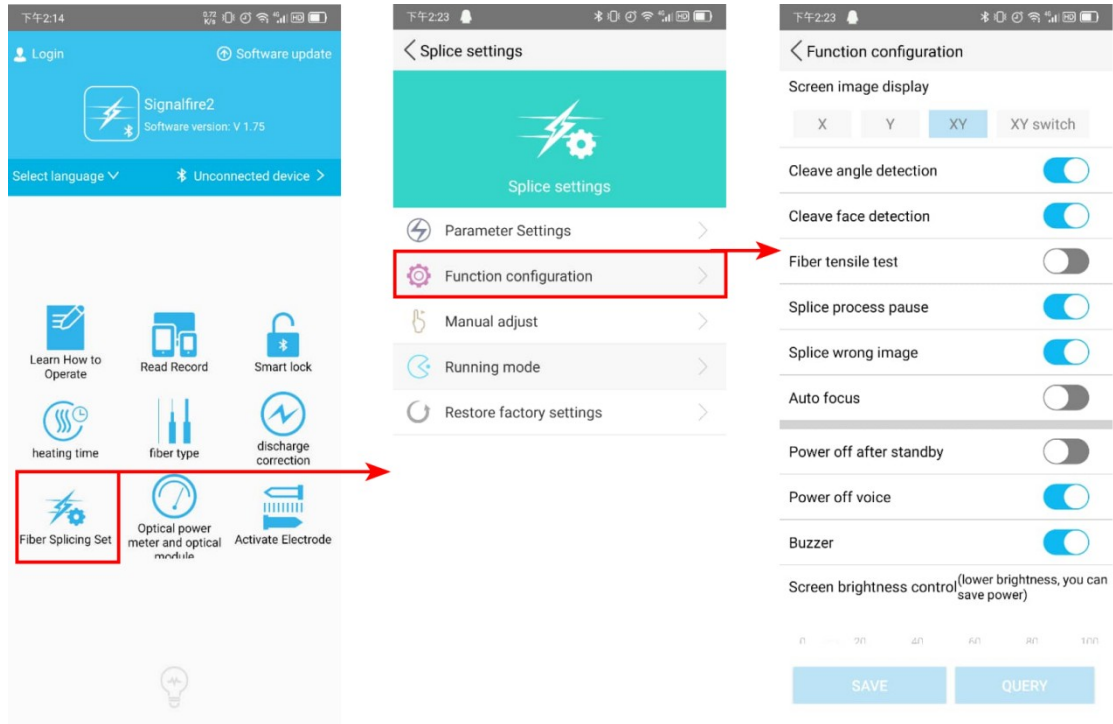


These parameter keep it and you do not need change it, and when we do arc calibration, it will auto change the parameter here.

Steps: choose “fiber splicing set” page -> choose “parameter setting” -> see the parameter, normally we do not change it.

## 7-2 function configuration

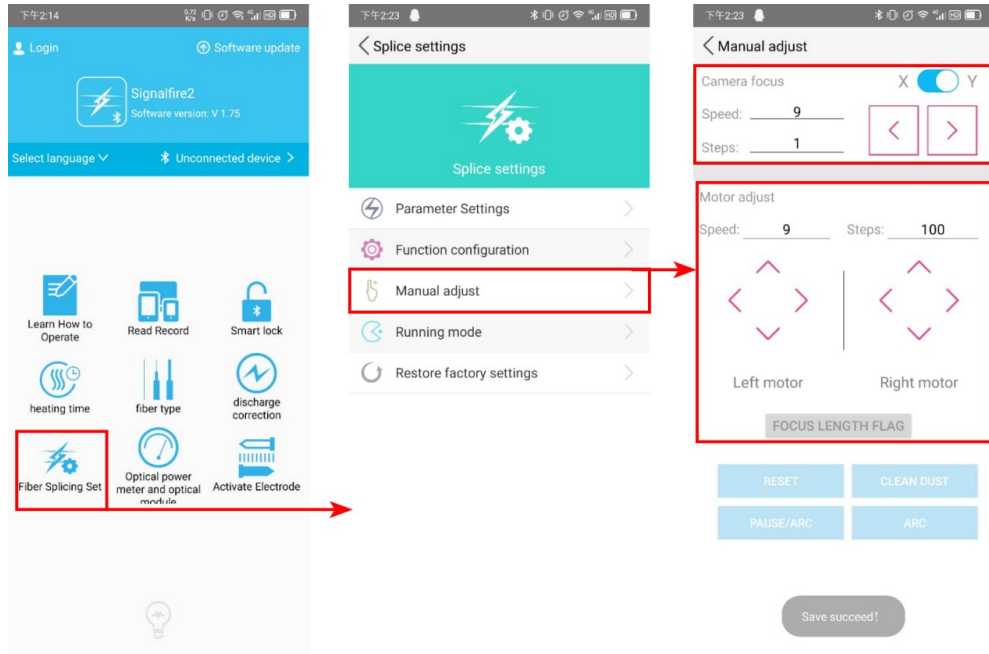




Fiber fusion process function, you can turn off the “splice process pause”, so that the fiber fusion will fully auto, and also the “auto focus” you can turn off, cause this will cost a lot time for focusing. Else you can use the original setting.

Steps: choose “fiber splicing set” page -> choose “function configuration” -> see the function button, and change what you need. (splice process pause usually use for checking the fiber display function, so we normally close it, when you find that the fiber is blurred, please open this function and check the machine.)

### 7-3 Manual adjust the motor



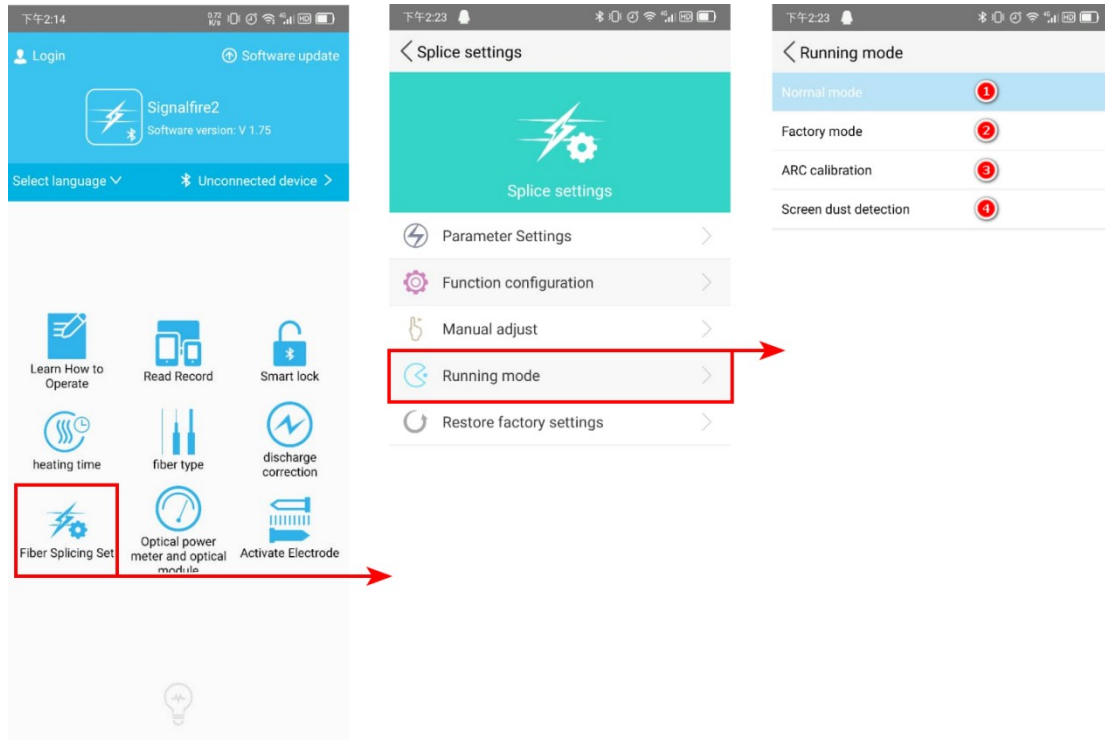
These function is combine with the “splice process pause” function, when you see the fiber is blurred, and you can control these 2 parts motor. One is camera focus motor, another is thrust and align motor, these 2 is separately.

Steps: choose “fiber splicing set” page -> choose “manual adjust” ->

1、the camera focus control the fiber display clear or not, X shows S Screen, Y shows Y screen. The left and right control the focus change, and steps change the on click change Variation.

2、The motor adjust control 2 parts. Left motor control left side( left and right control button, control fiber holder moving left and right, up and down control button,control v-grooves up and down moving),Right motor control Right side( left and right control button, control fiber holder moving left and right, up and down control button,control v-grooves up and down moving),

## 7-4 running mode



Different running mode we do different things.

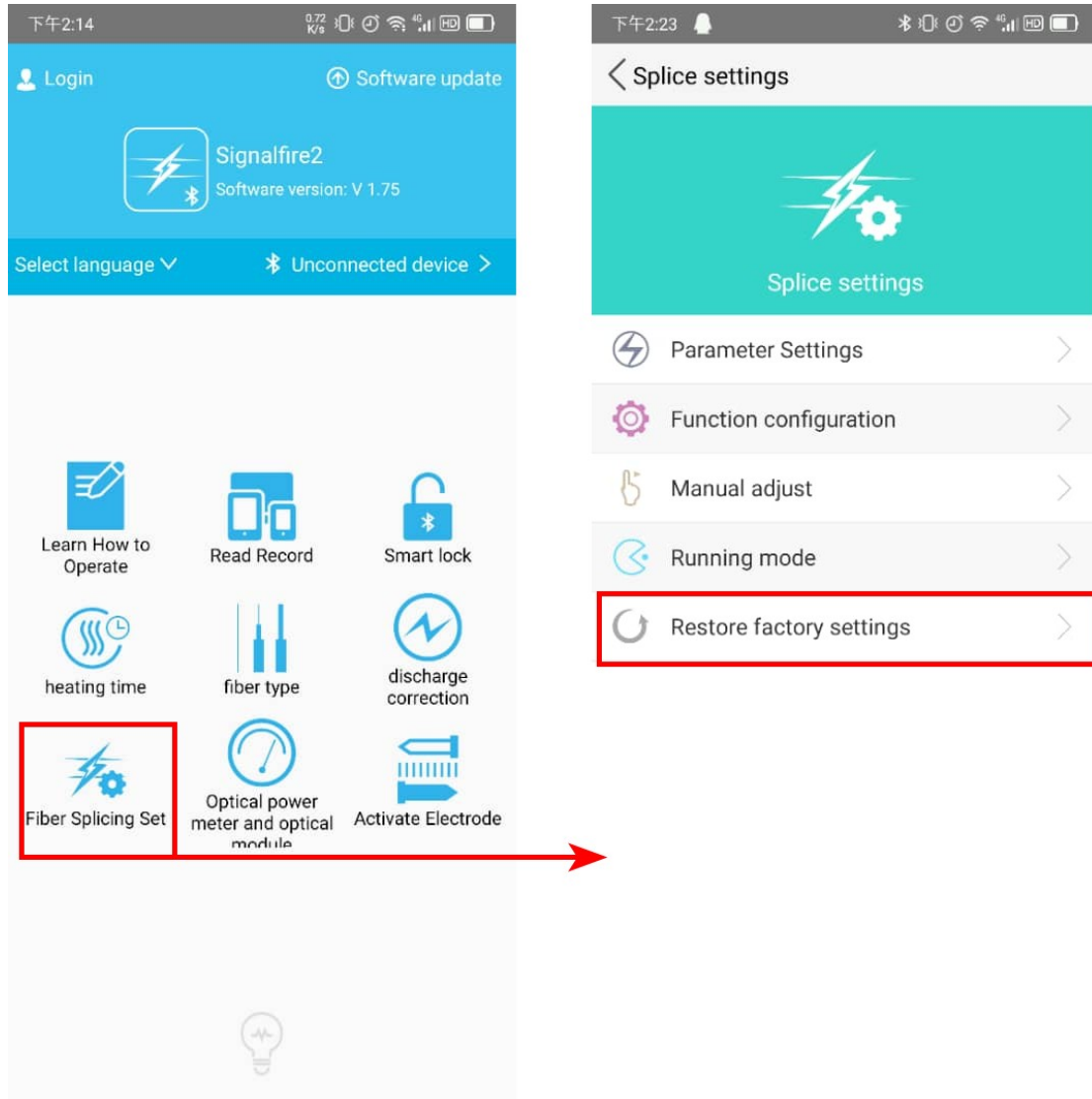
“Normal mode” is normal fiber fusion process.

“Factory mode” is checking the machine is pause, which same like  
**“splice process pause”** function.

“Arc calibration” is same of the page “discharge correction”.

“Screen dust detection” is to check the screen is shield by the dirt or something else. (when you do this check, please take the fiber out of the machine, and make the machine no fiber on it. Then we test the lens and CMOS)

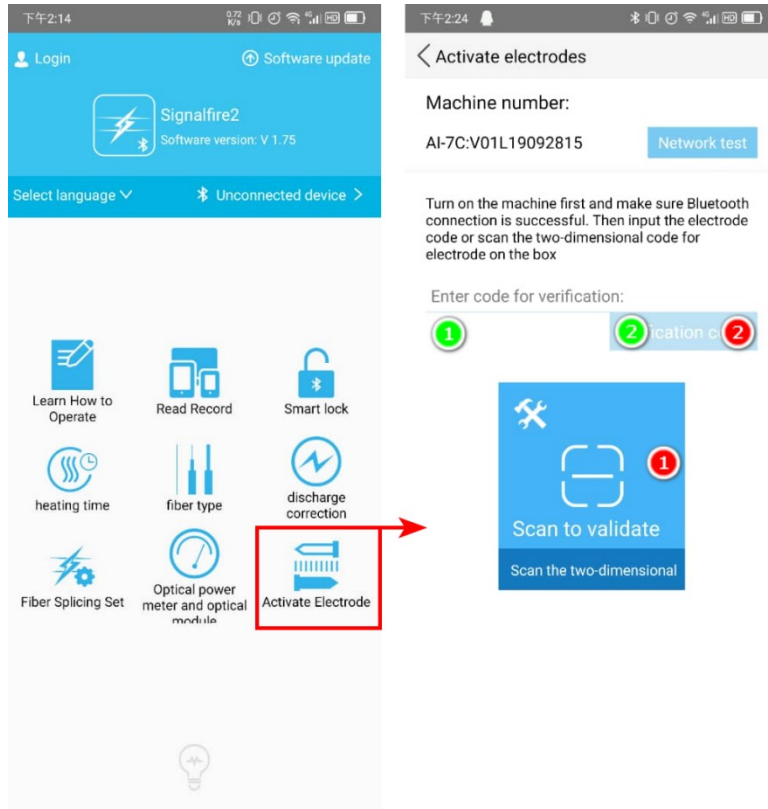
## 7-5 Restore factory settings



When you meet the problem about the machine can not normal working, especially the fiber Repeated push fiber and the screen is not show you the fiber, you can press this button, to restore the machine to a good status.

Steps: choose “fiber splicing set” page -> choose “restore factory settings”.

## 8) Active the Electrode



When your machine shows you that the electrode using times low than 100, you need change the electrode, then active the electrode with the electrode QR Code, this is necessary and one qr code only can use once.

Steps: choose “Active Electrode” Page -> then 2 ways to active the electrode

- 1、input the QR code number to the text box and then verification it.
- 2、Scan the QR Code directly and then verification it.

(if you meet the qr code is blurred, then you can input the qr code number, and if the both way can not solve, please contact after sales support.